

Right: Deep wood units lend a warm feel to the kitchen. It has a host of eco-friendly integrated appliances and a handy island unit

Below: These huge pull-out larder units are real space savers



Each year the park home show at Stoneleigh throws up a theme among the new homes on display. This year saw the launch of several 22ft-wide models, and there were also signs that several manufacturers were moving towards the use of more eco-friendly materials.

Pathfinder Park Homes has already started to embrace eco-friendliness in its models and the whole of the 2008 range can now be supplied with an energy-saving eco package. Showing off its green credentials at this year's show, Pathfinder launched its brand new eco-friendly model, the Haytor – a 45ft twin with stylish good looks and a host of practical features.

The front of the home is fully glazed with two sets of French doors leading out on to a veranda on the show model. Entering the home through these doors you are struck by the light and very modern decor – in fact, it felt more like a holiday home than a residential, but is that necessarily a bad thing? I think not.

In the UK we have plenty of dismal dreary winter days to contend with and I think it would be great to have a home that lets in huge amounts of light into the living area. In fact, there's a vaulted ceiling in the lounge and dining area that only enhances this sense of spaciousness.

Lounge

In addition to the glazed French doors at the front there are three deep glazed panels on one side wall and three deep windows with top openings on the other, making this room very light indeed. Venetian blinds are fitted to the glazed areas on the side wall and there are full-length lined curtains in a coffee and cream pattern at the French doors.

Anne Webb takes a look at Pathfinder's brand new model, the Haytor, and its innovative eco-package

A cook's delight

On the wall between the French doors there's an impressive wall-mounted inset log-effect feature electric fire and a flat screen wall-mounted television above.

The leather suite (with a cream finish in the show home I saw) comprises two two-seater settees and a single armchair. These occupy the whole width of the lounge and were angled to face the fire and television.

Dining area

Glass and stainless steel also feature in a small screen, topped by a balustrade, which separates the

lounge from the dining area. This division is also marked by a change in the floor level with a small step down from the lounge. Pathfinder has used this device for separating lounge and dining areas before and

the glazed screen and balustrade, should give enough warning.

The glass-top dining table is the same style as the coffee table in the lounge and the six chairs have seats and high backrests upholstered in

“The vaulted ceiling in the lounge enhances the sense of spaciousness”

I have questioned the safety aspect. Care would need to be exercised to avoid tripping, but small blue spotlights have been incorporated into the step and these, as well as

cream faux leather on stainless steel frames. Ceiling mounted spotlights are used throughout the home and in the living areas there are bright wall lights, too.

NOTES

Made by: Pathfinder Park Homes, Newton Abbot, Devon

For: residential use

It's got: open-plan lounge/diner, separate kitchen, office/study area, two double bedrooms (one with dressing area and wet room), kitchen with a host of integrated (and eco-friendly) appliances, and a large family bathroom.

Seen at: Retirement Lifestyle Show, Stoneleigh July 2007

Ask the expert



Mike Wills
Pathfinder Park Homes

What inspired this design?

We could see there was a gap in the market for an eco home, so we set out to design one that would fill it at a sensible price.

Which features do you like best?

This is a difficult question, but for me, someone who loves cooking, it's got to be the kitchen. There are lots of work surfaces, integrated appliances, pull out larder units and much more. Just what I love, cooking with style!

How have customers reacted?

We have had a great response to the Haytor and our eco package. Not everyone likes the raised lounge floor but as with all Pathfinder homes we can custom build to suit the customers' needs.

Kitchen

Access from the dining area to the kitchen on the opposite side of the home is through a frosted glass sliding door. This is a much darker room than the living areas and features warm wood-look units with a few cream-coloured ones interspersed and brown worktops. Equipment has a stainless steel finish and the vinyl tile-effect flooring and the ceramic wall tiles are in shades of beige.

This is a very well fitted and equipped area with a modern island work station. There's a high-level



Above: To create consistency and a flow through the home, the glass-top dining table is the same style as the coffee table in the lounge



Above: Put your feet up on one of the comfy settees. Shoes off please!



Above: The large lounge spreads across the whole width of the Haytor

Master bedroom suite

A three-in-one arrangement with an opening from the bedroom to a dressing area and from there via a glazed door into the wet room

Study

Built into a hall cupboard, it's compact and practical

Kitchen

Plenty of storage space combined with plenty of modern eco-friendly integrated appliances

Second bedroom

Features a 4ft 6in wide double bed plus dressing table and two wardrobes

Family bathroom

Bath is built into a tiled surround and toilet cistern and basin are within a vanity unit incorporating a small cupboard

Dining area

Step down from the lounge to a glass-topped table and high-back cream leather-look chairs

Lounge

Spacious with vaulted ceiling, cream colour carpet and leather suite

double oven against the front wall with cupboards above and below. Adjacent is a worktop with cupboards and drawers underneath and locker cupboards (some with glazed doors) on the wall above. Useful lights positioned underneath the wall cupboards illuminate the working areas.

An electric ceramic hob is incorporated into this worktop with a stainless steel chimney style illuminated cooker hood above.

More cupboard and drawer units are on the other side of the hob and these extend into the corner

where a sophisticated carousel cupboard gives easy access to the storage space.

The worktop extends around the corner to the side wall where there is more storage in cupboards and drawers. A stainless steel sink unit is inset into the worktop and a dishwasher and washing machine are integrated underneath.

The back door with its obscure glass in the top panel is adjacent to this worktop.

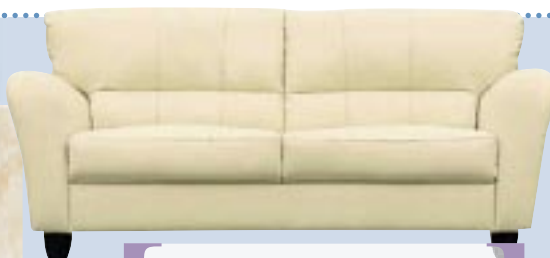
Ranged along the back wall is an integrated fridge/freezer plus three very useful pull-out larder

cupboards. When closed these look like any other cupboards (and they have the same finish as the integrated fridge/freezer next to them). However, a gentle pull on the handle draws them into the room (rather like a filing cabinet drawer) where racks are revealed – ideal for storing tins and all sorts of cleaning products or crockery.

In common with the rest of the Haytor, its kitchen has ceiling-mounted spotlights but a feature has been created over the island unit whereby the ceiling is slightly raised to incorporate a plinth where more lights are mounted.

The island unit has small blue lights at floor level (in the same style as those in the step between

Get the look



Cheat with faux leather

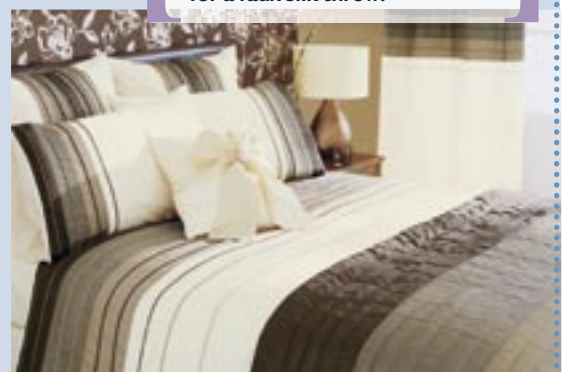
Leather settees can be expensive so go for this large Tia faux leather ivory option from Argos for just £499.

Weekend project

Why not add a few inexpensive stencils to your bathroom tiles for a whole new look.

Create a cosy bedroom

The Haytor's chocolate and cream scheme is so popular right now. This range from Next costs from £8 for a pillowcase to £70 for a faux silk throw.





Above: The dressing area and en suite shower room

Right: Chocolates and creams in the relaxing master bedroom



filing drawers should more storage space be needed. An office chair is provided, too. It's not a huge room, and can only be used with the doors open, but this gives anyone working there the chance to spread out into the hall. It's not a completely new idea though – Omar first used it in its Concept home introduced at Stoneleigh a couple of years ago. Pathfinder has adapted this and taken the opportunity in the Haytor to provide a small workstation without having to sacrifice a bedroom.

Master bedroom suite
The master bedroom, bathroom and dressing room occupy an area about 20ft long by 10ft wide to the rear of the kitchen.

Access to the bedroom is from a door towards the end of the hall and from there an open archway leads to the dressing area and a sliding door beyond that to the shower room.

The bed is positioned against the partition wall with a deep chocolate padded headboard. Cabinets in a light wood are fitted on either side of the bed with electricity sockets and switches for the single wall light above the bed.



THE ECO-FRIENDLY PACKAGE

This package is now available in all Pathfinder models and costs about £5,000 extra for each home.

THE PACKAGE INCLUDES:-

- » Hemp wool insulation (to ceiling floors and walls). This is a mixture of hemp and sheep's wool, which takes out CO2 from the atmosphere.
- » Foil-backed plasterboard, which keeps the home warm in winter and cool in summer.
- » Argon gas-filled double glazed window units.
- » Thermostatic controls on all taps and the shower.
- » Energy-saving appliances – all AAA grade – fridge/freezer, dishwasher, oven and washing machine.

Customers are offered a choice with regard to how little or how much of this package they want; a roughcast exterior was displayed on the Haytor at Stoneleigh but it can also be clad in sustainably-sourced timber.

Lowering its carbon footprint is one of Pathfinder's main priorities.

For every park or holiday home it produces it sponsors the planting of five more trees by a woodland regeneration organisation.

the dining area and the lounge). There are cupboards on either side and it could easily be used as a breakfast bar if suitable height stools could be found.

Hall and office/study

The main entrance to the Haytor is on the side wall and the half-glazed door is recessed, forming a handy porch area. In the hallway a door on the left reveals a generous-size cloaks cupboard and straight ahead is one of the home's most unusual and innovative features – a computer room, hidden behind aluminium shutter-style doors.

These doors neatly fold to the side to reveal a built-in desk, shaped to accommodate a computer with the necessary power points and phone connections on the wall behind, and a shelf above. There's room under the desktop for freestanding



Left: A door from the hallway reveals this hidden gem. An office in a cupboard – a compact and practical workstation without having to sacrifice a bedroom



Above: The second bedroom is in the same style as the master

The Haytor checklist

SIZE
45ft x 20

BEDROOMS
Two doubles – both with 4ft 6in beds

BATHROOMS
One family bathroom – the full size bath features a shower attachment. One en suite wet room

PRICE
The 45ft x 20 carries an ex-works price of £112,000. This includes the eco package. The exterior is offered in stipple, log clad or Vulcan clad.

INFORMATION
This home is sited at Tregatillian Park, St Columb, Cornwall at a sited price of £189,000. For further details call 07748 967 044.

OTHER DETAILS
Pathfinder offers customers plenty of options on their fabrics, furniture, fixtures and fittings.

MANUFACTURER
Pathfinder Park Homes Ltd, Cavalier Road, Heathfield, Newton Abbot, Devon TQ12 6FJ. Tel: 01626 833799. Email: sales@pathfinderhomes.co.uk www.pathfinderhomes.co.uk

Lined curtains are in oatmeal fabric with a swirling pattern and there's a wide and long ledge under the window with six drawers underneath. On either side there are tall cupboards with obscure glass panel doors.

An opening on the back wall leads through to a useful dressing area. On the left there's a dressing table with three-drawer pedestals

sliding mirror doors hide plenty of wardrobe hanging space. This area is well lit by ceiling spotlights.

From the dressing area a sliding obscure glass door gives access to the shower room, although wet room is probably a more accurate description.

This area is fully covered in beige ceramic tiles with a brown feature strip at waist height. The

“I love the light, spacious and modern feel of Pathfinder's Haytor”

either side of kneehole space and a rectangular mirror features on the wall above. On the other side

shower area is across the whole width of this room, partly closed off by a screen and with a sloping



Above: The Haytor uses attractive feature tiles for the surround on the semi-sunken bath and for the mirror border above, too

floor to allow water to drain away. A heated ladder-style towel rail is wall mounted.

Second bedroom

In similar style to the master, this too is at the rear of the home, but on the opposite side. The bed, also 4ft 6in wide, has the same style bedside cabinets and the windows and curtains are also the same.

A dressing table unit is against the side wall with three drawers underneath and a double switched power point to one side. No mirror is provided – but a freestanding one could easily be added. Two double-door wardrobes are fitted at the foot of the bed.

Family bathroom

Positioned between the second bedroom and the main entrance, with access from the hall, this is a compact room with a semi-sunken bath set into a tiled surround.

Like the en suite, this room is fully tiled with a feature waist band pattern and the same contrasting tiles form a frame around the mirror tiles on the back wall.

My verdict

I love the light, spacious and modern feel of the Haytor and can see it finding favour on up-market holiday parks as well as on residential ones.

To take advantage of the double French doors on the front (presumably leading to a deck or a patio) the home would need a very special plot – ideally sited back to the road so that the French doors gave access to a garden area. However, the rather plain appearance of the back of the home is not going to look great in a roadside situation.

I've already voiced misgivings about the step down from the lounge to the dining area – not a big step but one which could easily trip the unwary. I'll concede that it does make a division between the two areas – but how important is that? Speaking as a notoriously clumsy person, I'd go for safety over style – but that's obviously a personal opinion and I'm sure that Pathfinder would be happy to adapt the home if required.

The master bedroom suite is wonderful and it's a very sensible arrangement with plenty of space in each section. The space-saving features in the kitchen were also impressive, as were the AAA-rated electrical appliances

Congratulations to Pathfinder on all of its green initiatives – I, for one, will look forward to seeing the company's further progress down this route.

